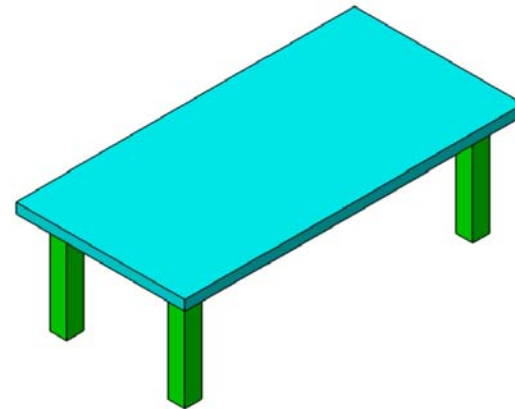


# Working with



**aras**  
**INNOVATOR®**

## Table example



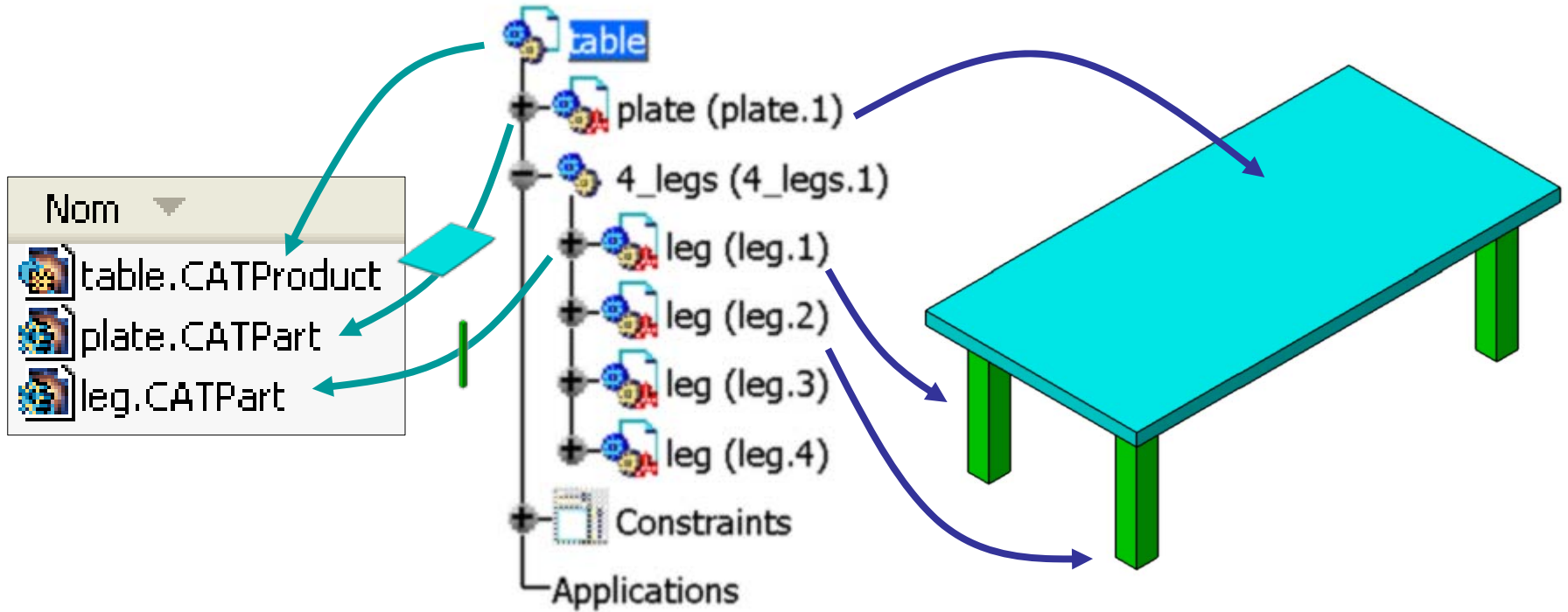
Pascal Morenton

[pascal.morenton@ecp.fr](mailto:pascal.morenton@ecp.fr)

<http://www.plmlab.fr/index.php?page=cadinn>



# BOM & CAD Documents in CATIA V5 – 1/3

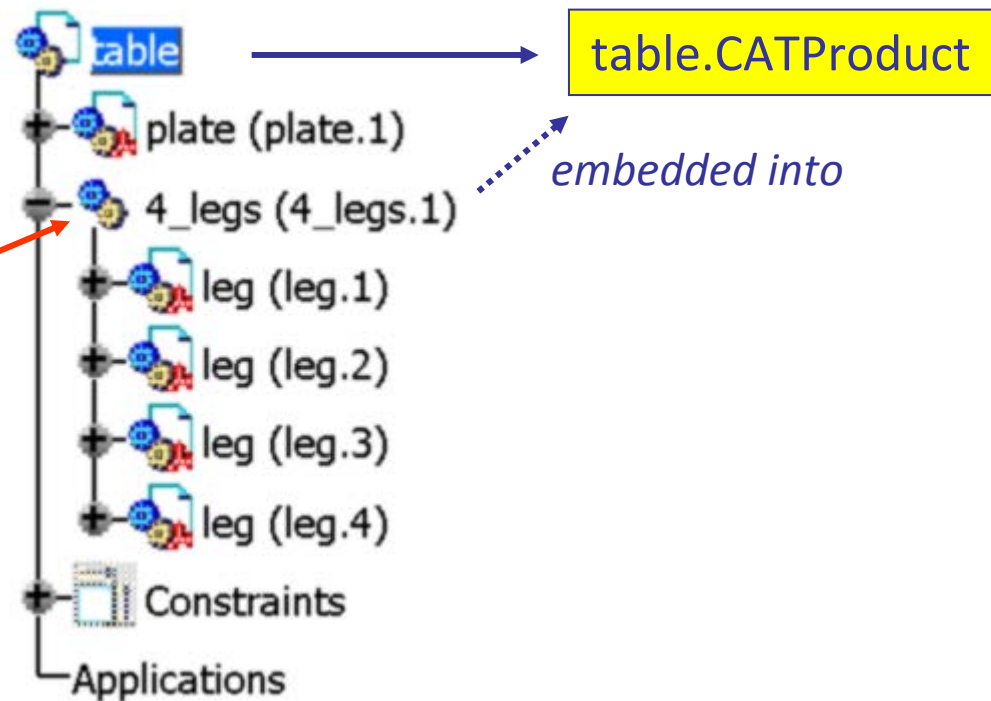
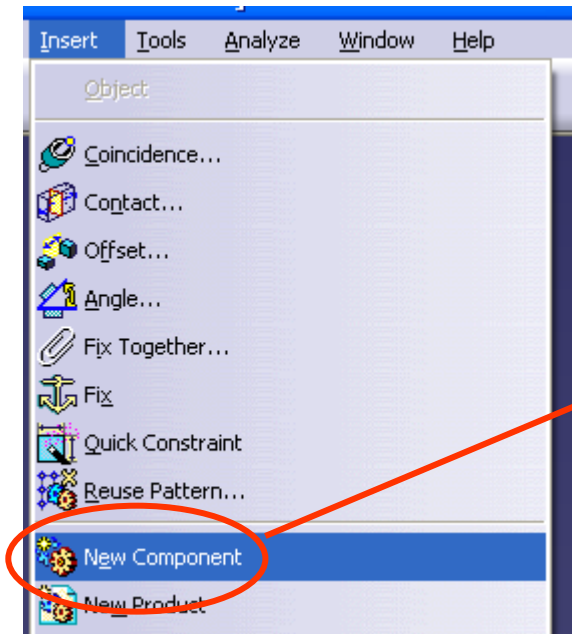


Files

BOM

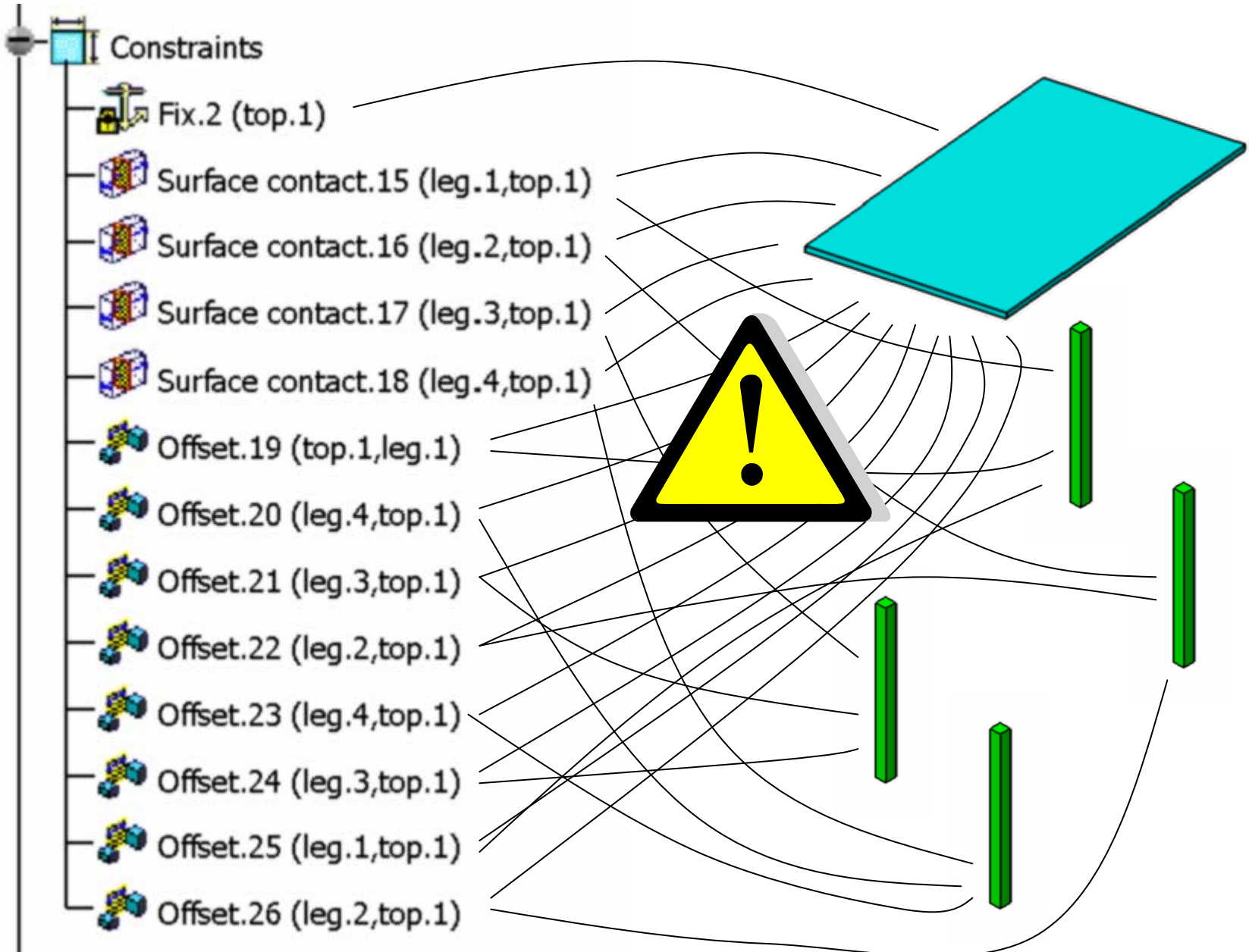
3D model

# BOM & CAD Documents in CATIA V5 – 2/3

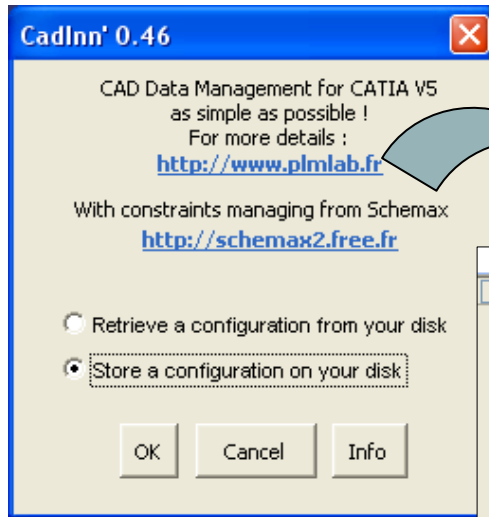


a component is « embedded » into its father (a product). It's just a way for structuring a system for business needs

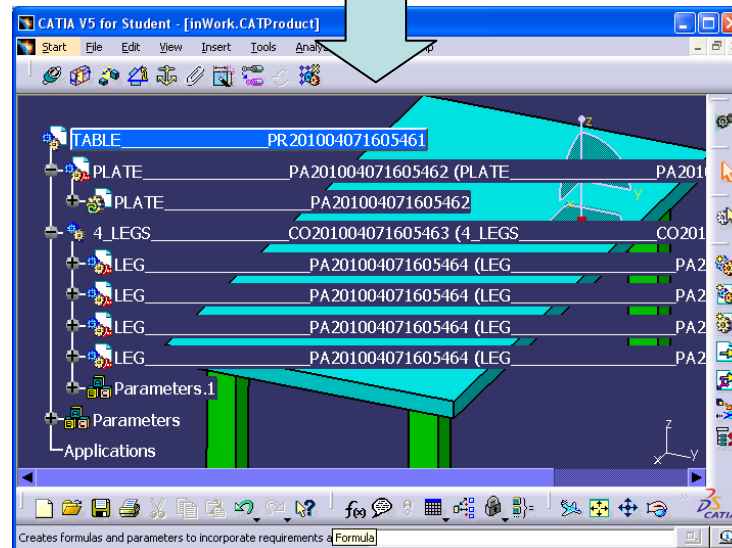
# BOM & CAD Documents in CATIA V5 – 3/3



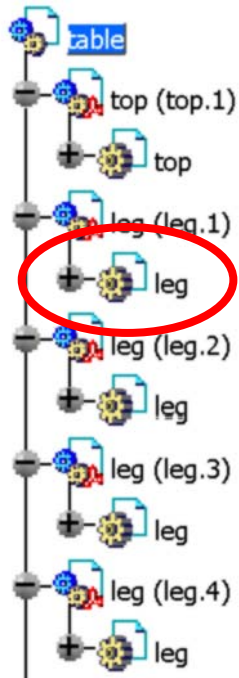
# Step 1 : Processing the CAD model with CAD Inn'



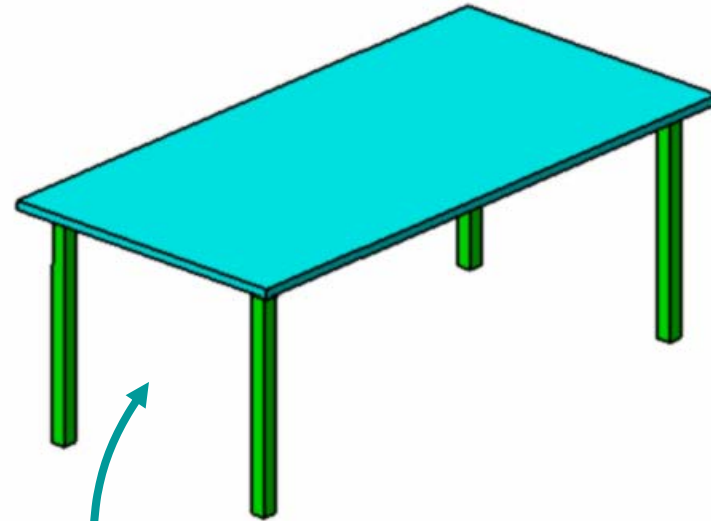
AG4																										
1	2	K		L		S	T	U	V	W	X	Y	Z	AA	AB	AC	AD	AE								
1																										
2	RAS	Import from ARAS																								
3																										
4																										
5	<b>Part Number</b>	<b>Father Part Number</b>										<b>Qty</b>	<b>iX</b>	<b>iY</b>	<b>iZ</b>	<b>jX</b>	<b>jY</b>	<b>jZ</b>	<b>kX</b>	<b>kY</b>	<b>kZ</b>	<b>oX</b>	<b>oY</b>	<b>oZ</b>		
6	PR002170EA6A57201004071605460001	PR002170EA6A57201004071605460001										0														
7	PA002170EA6A57201004071605460002	PR002170EA6A57201004071605460001										1	1	0	0	0	1	0	0	0	1	0	0	0		
8	CO002170EA6A57201004071605460003	PR002170EA6A57201004071605460001										1	1	0	0	0	1	0	0	0	1	0	0	0		
9	PA002170EA6A57201004071605460004	CO002170EA6A57201004071605460003										4	1	0	0	0	1	0	0	0	1	425	175	0		
10																										
11																										
12																										
13																										



# Plate / legs relative positions



*The shapes are defined in the CAD files*



*The positions of the parts are driven by the position matrix saved in a PDM system (figured here by a spreadsheet)*

D	H	I	J	K	L	M	N	O	P	Q	R	S	T
Name	Qty	iX	iY	iZ	jX	jY	jZ	kX	kY	kZ	oX	oY	oZ
TABLE PR200911022225481_A1	0												
TOP PA200911022225482_A1	1	1	0	0	0	1	0	0	0	1	0	0	0
LEG PA200911022225484_A1	4	1	0	0	0	1	0	0	0	1	778	301	0
		1	0	0	0	1	0	0	0	1	870	-198	0
		1	0	0	0	1	0	0	0	1	-830	-329	0
		1	0	0	0	1	0	0	0	1	-877	385	0

# Step 2 : Exporting the datas into a PDM system

AG45

1 2	K	L	S	T	U	V	W	X	Y	Z	AA	AB	AC	AD	AE
1															
2	RAS	Import from ARAS													
3															
4															
5	<b>Part Number</b>	<b>Father Part Number</b>	<b>Qty</b>	<b>iX</b>	<b>iY</b>	<b>iZ</b>	<b>jX</b>	<b>jY</b>	<b>jZ</b>	<b>kX</b>	<b>kY</b>	<b>kZ</b>	<b>oX</b>		
6	PR002170EA6A57201004071605460001		0												
7	PA002170EA6A57201004071605460002	PR002170EA6A57201004071605460001	1	1	0	0	0	1	0	0	0	1	0	0	0
8	CO002170EA6A57201004071605460003	PR002170EA6A57201004071605460001	1	1	0	0	0	1	0	0	0	1	0	0	0
9	PA002170EA6A57201004071605460004	CO002170EA6A57201004071605460003	1	1	0	0	0	1	0	0	0	1	0	0	0
10															
11															
12															
13															

**Export**

**Import**

http://www.plm-academie.com/?id=9752CAACCA8641F7B6B0...35137E&type\_...

- Article - PR002170EA6A57201004071605460001 - A.1
  - Article - CO002170EA6A57201004071605460003 - A.1
    - Article - PA002170EA6A57201004071605460004 - A.1
      - Document - CATIA\_201004071615402 - A.1
  - Article - PA002170EA6A57201004071605460002 - A.1
    - Document - CATIA\_201004071615401 - A.1

# Step 3 : Managing the changement

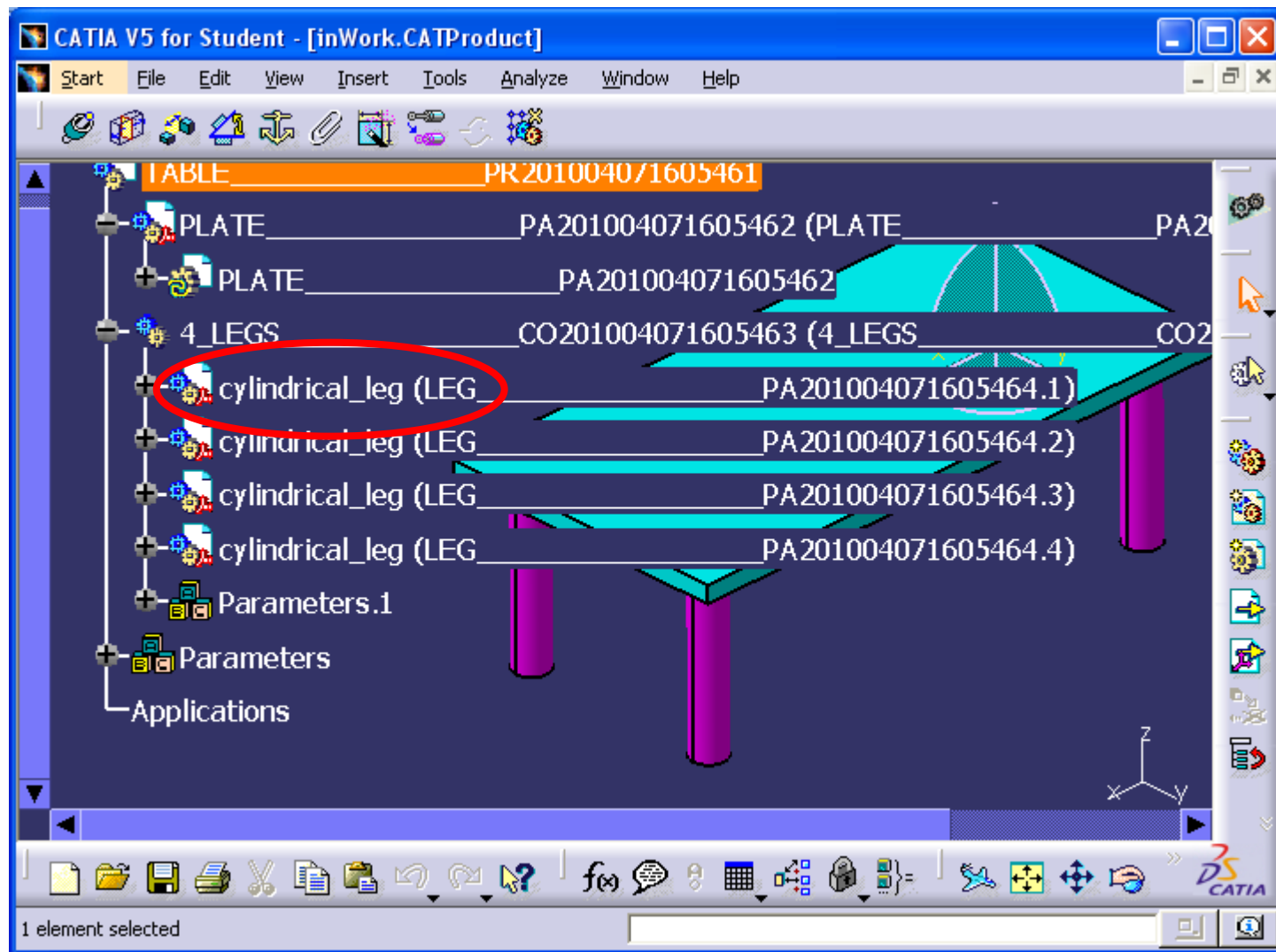
The screenshot shows a web browser window displaying a change request (PR) management interface. The browser's address bar shows the URL: <http://www.plm-academique.com/> - PR - 55C80BDC774F4F54938ECD58EA7FE566 - Windows Internet Explorer. The interface includes a menu bar (File, Edit, Views, Search, Actions, Reports, Tools, Help) and a toolbar with various icons. The main content area is divided into several sections:

- PR** (Problem Request) section on the left, containing fields for Created By, Created On, Modified By, Modified On, and Locked By.
- Référence PR** (PR Reference) field with the value "Server Assigned".
- Titre** (Title) field with the value "Replage the legs".
- Statut** (Status) field.
- Environnement Applicatif** (Application Environment) field.
- Item Affectés** (Affected Items) field, which is circled in red and contains the value "PR002170EA6A5720100".
- Séquence Des Évènement Amenant Au Problème** (Sequence of Events Leading to the Problem) field.
- Description Du Problème** (Problem Description) field, with a radio button selection for "Priorité Pour Revue Technique" (Priority for Technical Review) set to 1.
- Verification Du Problème** (Problem Verification) field.
- Base** (Base) section with radio buttons for "Hierarchie administrative" (Administrative Hierarchy) and "Hierarchie physique" (Physical Hierarchy).
- Rapporté Par** (Reported By) field.
- Créateur Désigné** (Designated Creator) field.
- Phase Cause** (Cause Phase) dropdown menu.
- Phase Trouvé** (Found Phase) dropdown menu.

At the bottom, there is a "Fichiers" (Files) section with a toolbar for actions like "Create Related" and a table with columns: "Nom du Fichier" (File Name), "Type de Fichier [...]" (File Type [...]), "Commentaires" (Comments), and "Séquence" (Sequence). The status bar at the bottom shows "Ready", "0 Items found.", and the "aras INNOVATOR" logo.



# Step 4 : modifying the local CAD data



# Step 5 : Updating the excel file

CadInn' 0.46

CAD Data Management for CATIA  
as simple as possible !  
For more details :  
<http://www.plmlab.fr>

With constraints managing from Schemax  
<http://schemax2.free.fr>

Retrieve a configuration from your disk  
 Store a configuration on your disk

OK Cancel Info

Rechercher un

Choose the target folder to save the current configuration

Administratif  
Adobe  
Anciens bureaux  
Autodesk  
CadInn  
CadInn Archives  
CadInnRexPLM  
CadInnVideos  
CadInnWork  
1  
InWork  
CadInnWork0411.app

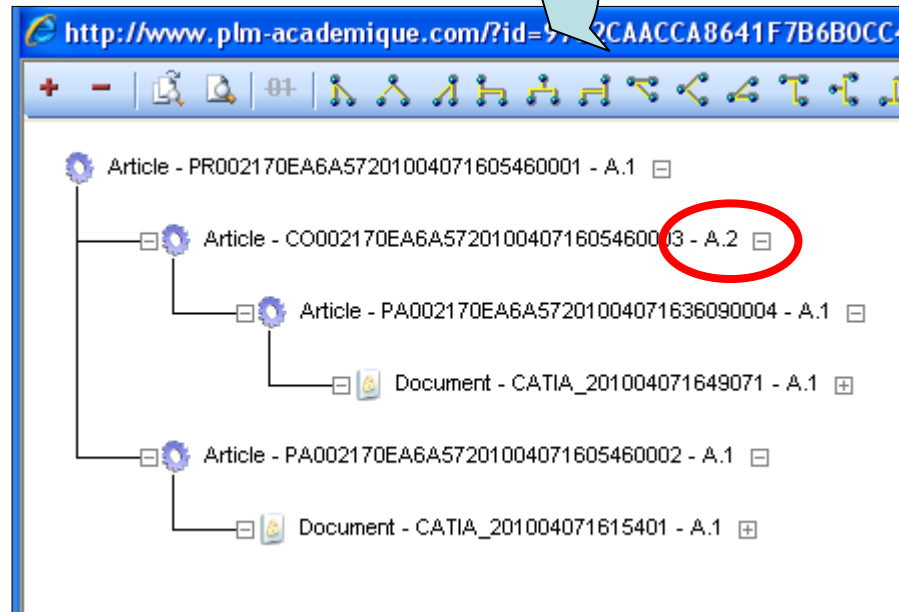
P18

	P	Q	S	T	U	V	W	X	Y	Z	AA	AB	AC	AD	AE
1															
2															
3															
4															
5	Thumbnail	3DXML view	Qty	iX	iY	iZ	jX	jY	jZ	kX	kY	kZ	oX	oY	oZ
6			0												
7	PLATE PA201004071605462_A1.jpg	PLATE PA201004071605462_A1	1	1	0	0	0	1	0	0	0	1	0	0	0
8			1	1	0	0	0	1	0	0	0	1	0	0	0
9	CYLINDRICAL LEG PA201004071636094_A1.jpg	CYLINDRICAL LEG PA201004071636094_A1	4	1	0	0	0	1	0	0	0	1	425	175	0
13															
14															
15															
16															
17															
18															
19															
20															
21															
22															
23															
24															

Pascal Morenton:

# Step 6 : Updating the PDM datas

Load into CATIA V5		Load a flat model		Get the PDM status		Export to ARAS		Import from ARAS			
*** Local repository ***					*** PDM vault ***						
Active	Status	Version	Iteration	Owner	ToDo	Status	Version	Iteration	Owner	Part Number	Father Part Number
Yes		A	1	moren	=	Unlocked	A	1	Innovator Admin	PR002170EA6A57201004071605460001	
Yes		A	1	moren	=	Unlocked	A	1	Innovator Admin	PA002170EA6A57201004071605460002	PR002170EA6A57201004071605460001
Yes	Modified	A	2	moren	>>>	Unlocked	A	1	Innovator Admin	CO002170EA6A57201004071605460003	PR002170EA6A57201004071605460001
Yes	Created	A	1	moren	>>>	None	?		?	PA002170EA6A57201004071636090004	CO002170EA6A57201004071636090003



# Step 7 : comparing the two BOMs

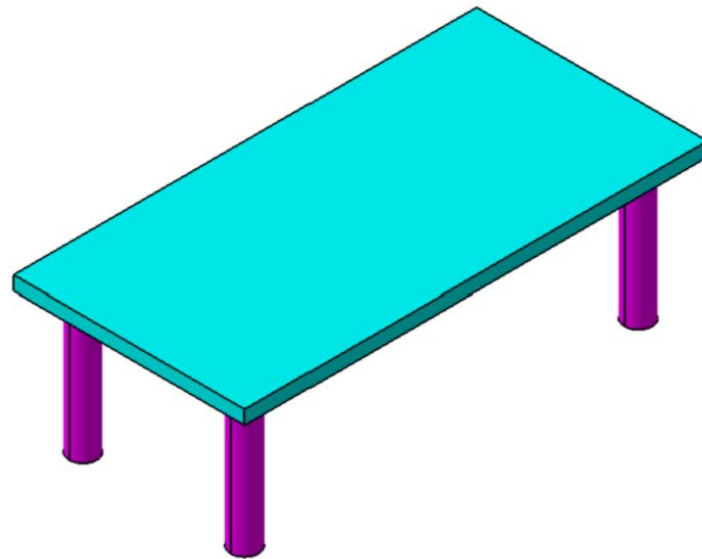
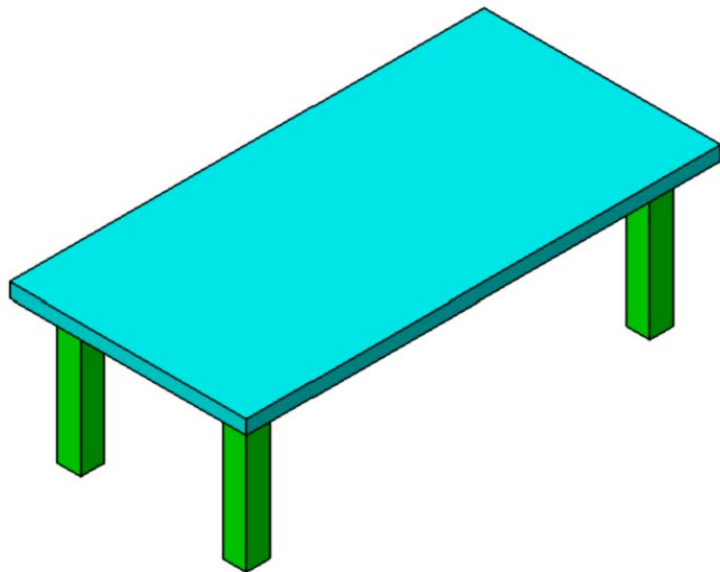
http://www.plm-academie.com/?id=7181B0CB573042D5B11B98A4B01348B4&type\_name=Part - Structure B - Windows Internet Explorer

Article - CO002170EA6A57201004071605460003 - A.2

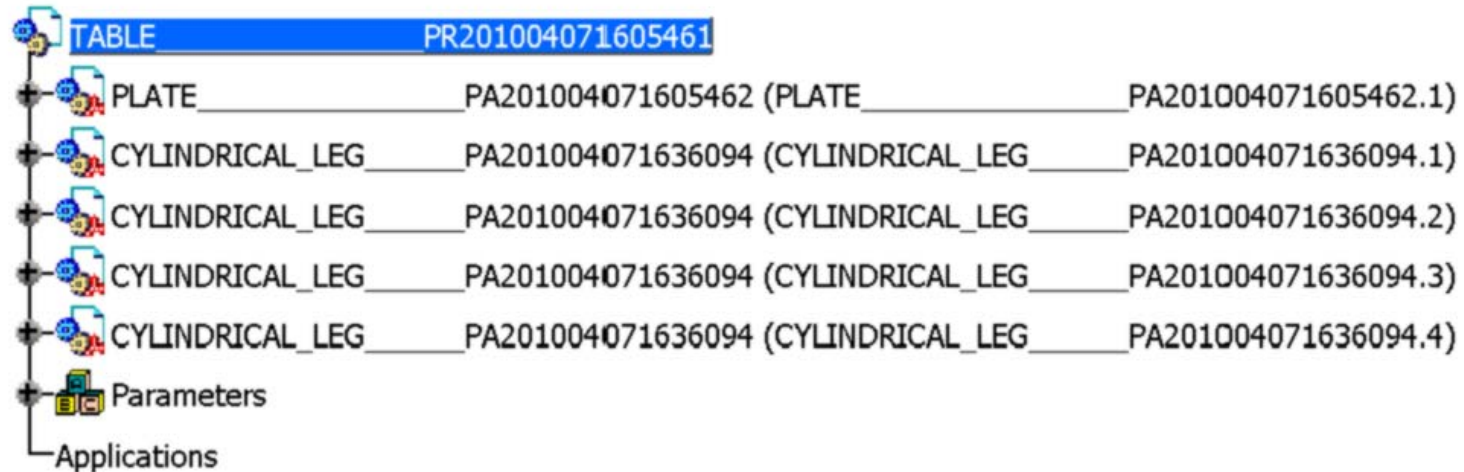
- Article - PA002170EA6A57201004071636090004 - A.1
  - Document - CATIA\_201004071649071 - A.1
    - Fichier - CYLINDRICAL\_LEG\_\_\_\_PA201004071636094.CATPart - A.1
      - Vault - Default - A.1

Article - CO002170EA6A57201004071605460003 - A.1

- Article - PA002170EA6A57201004071605460004 - A.1
  - Document - CATIA\_201004071615402 - A.1
    - Fichier - LEG\_\_\_\_PA201004071605464.CATPart - A.1
      - Vault - Default - A.1



# Step 8 : changing locally the BOM



A screenshot of a software interface showing a toolbar with a red circle around the 'Get the PDM status' button. Below the toolbar is a data table with columns for 'Active', 'Status', 'Version', 'Iteration', 'Owner', 'ToDo', 'Status', 'Version', 'Iteration', 'Owner', and 'Part Number'. The table is divided into two sections: 'Local repository' and 'PDM vault'. A red circle highlights the 'Get the PDM status' button and the first three rows of the table.

Active	Status	Version	Iteration	Owner	ToDo	Status	Version	Iteration	Owner	Part Number
Yes	Modified	A	2	moren	>>>	Unlocked	A	1	wator Ad	PR002170EA6A57201004071605460001
Yes		A	1	moren	=	Unlocked	A	1	wator Ad	PA002170EA6A57201004071605460002
Yes		A	1	moren	=	Unlocked	A	1	wator Ad	PA002170EA6A57201004071636090004

# Step 9 : comparing the BOMs

